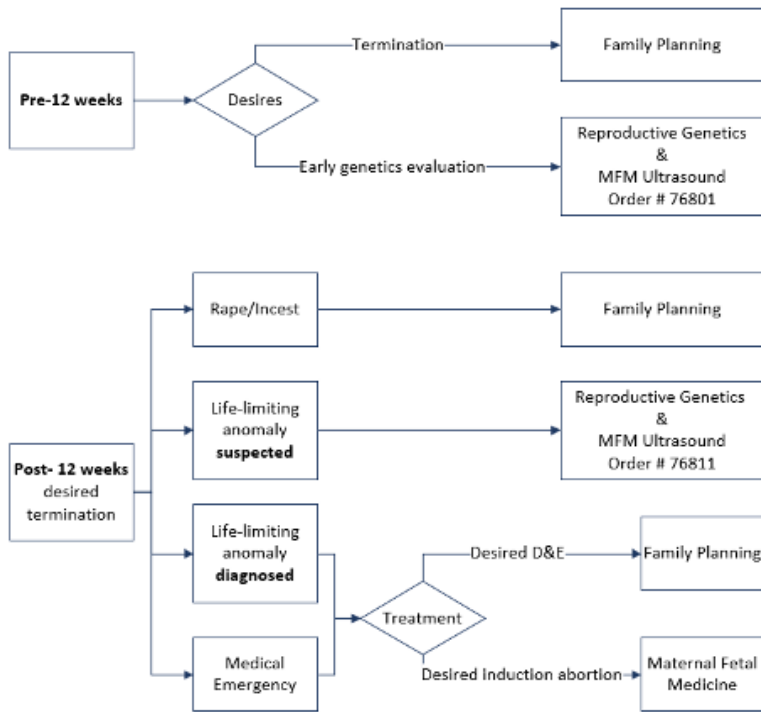


Contact Triage for Abortion Care

Contact Triage for Abortion-Related Care



Contacting Family Planning:

Routine Scheduling

Epic Referral

Urgent Scheduling

(<48 hours):

Epic Referral + Phone Call 984-974-8955

After Hours/Weekend

Urgent Clinical Question/Care Concern/**Emergent Scheduling:**

Family Planning Fellow On Call - One Call Directory

Contacting Maternal Fetal Medicine/Ultrasound:

Routine Scheduling:

Epic Referral

Urgent Scheduling

(<48 hours):

Epic Referral + Phone Call 919-784-6425

"Presence of suspected fetal anomaly"

After Hours/Weekend

Urgent Clinical Question/Care Concern/**Emergent Scheduling:**

OB Antepartum Attending (24/7 MFM on call)
UNC Transfer Center to page OB Attending on call

How to Send Epic@UNC Referrals:

Referral to Family Planning:

Order Number: REF30 (Gynecology)

Specialty: Gynecology

Referred To Department:

UNC FAMILY PLANNING HILLSBOROUGH

Referral to Maternal Fetal Medicine:

Order Number: REF86

Specialty: Obstetrics

Referred To Department:

UNC MATERNAL FETAL MEDICINE AT VILCOM CENTER
UNC MATERNAL FETAL MEDICINE RALEIGH

Referral to Reproductive Genetics:

Order Number: REF210

Specialty: Obstetrics

Referred To Department:

UNC MATERNAL FETAL MEDICINE AT VILCOM CENTER
UNC MATERNAL FETAL MEDICINE RALEIGH

MFM Ultrasound Orders:

OB IMG US orders- always select UNC for UNC MFM
US procedures

***Picking a Referred To Department is
A MUST to ensure proper care timeline**