

# Clinical Pathway for Ingested Foreign Bodies in Children

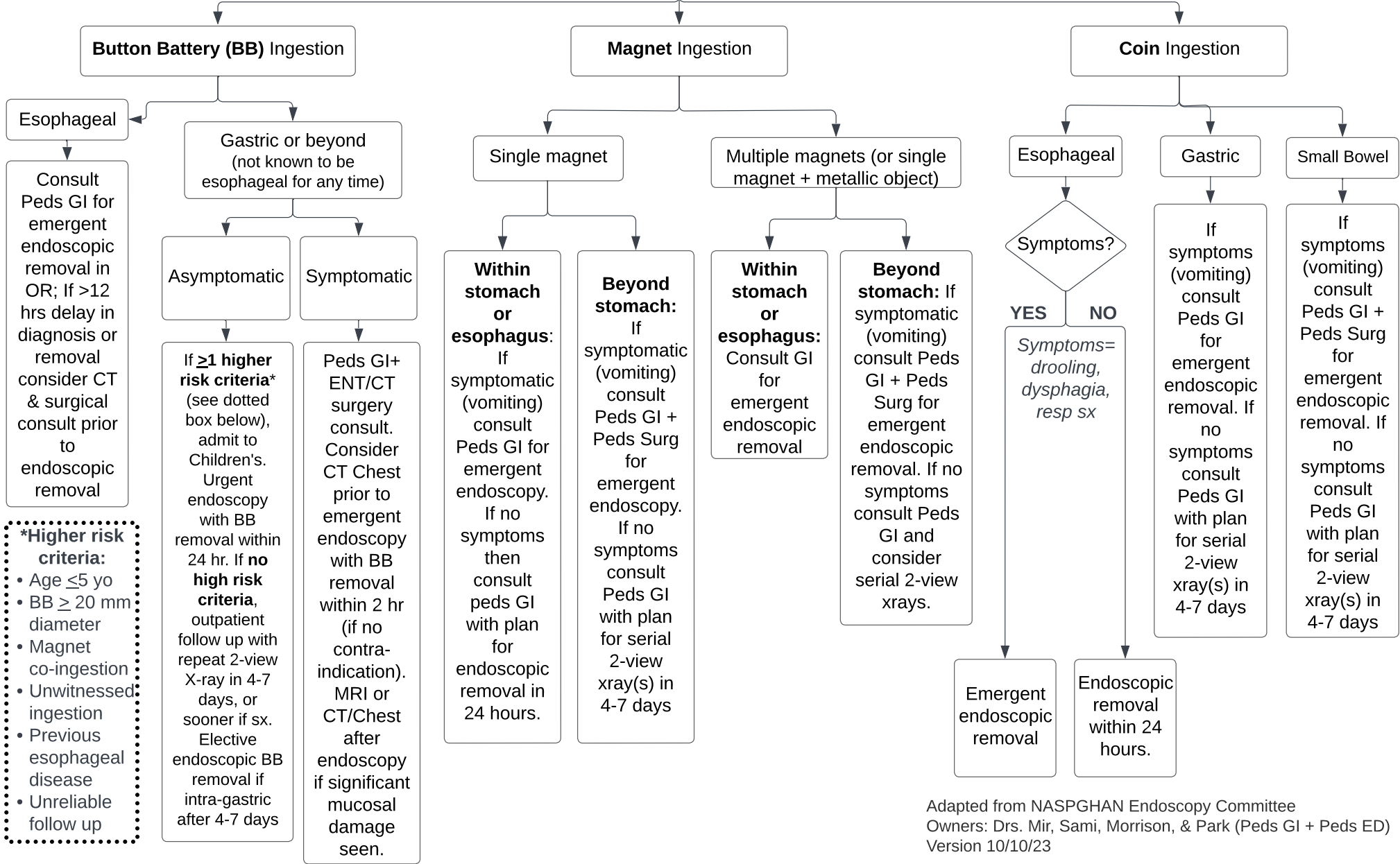
The following information is only intended as a guideline for the acute management of children with suspected foreign body ingestion (button batteries, magnets, coins). Management of your patient may require a more individualized approach

Poison Control button battery reference:  
<https://tinyurl.com/lye267dzp>



History/Physical/Radiographs concerning for foreign body ingestion **below the clavicle** (above = ENT)

*For potential OR cases please alert Peds GI as soon as possible in order to prepare for OR!*



- \*Higher risk criteria:**
- Age ≤5 yo
  - BB ≥ 20 mm diameter
  - Magnet co-ingestion
  - Unwitnessed ingestion
  - Previous esophageal disease
  - Unreliable follow up

Adapted from NASPGHAN Endoscopy Committee  
Owners: Drs. Mir, Sami, Morrison, & Park (Peds GI + Peds ED)  
Version 10/10/23