

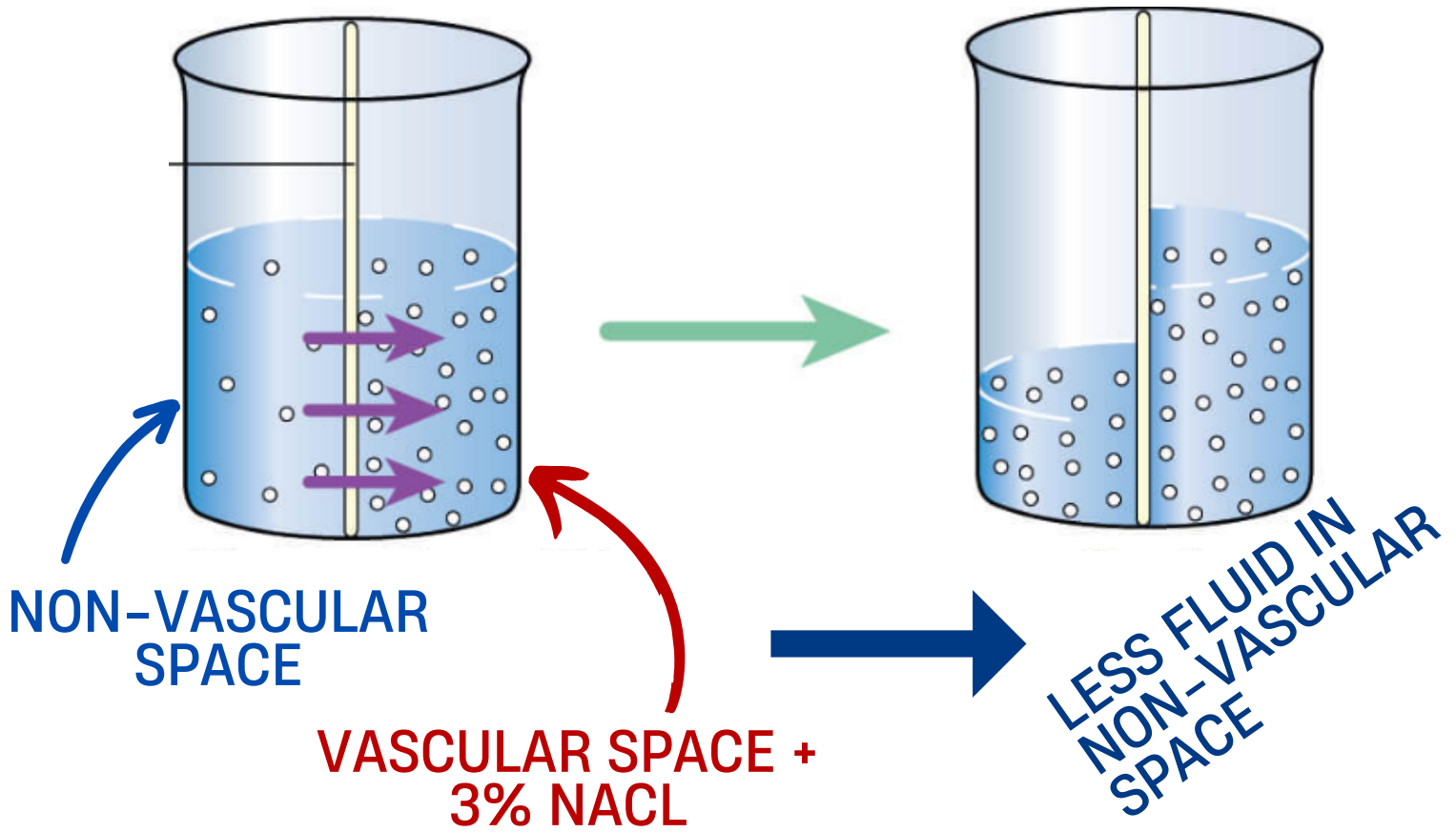
HYPERTONIC SALINE

IN THE PEDS ED AT UNC

TECHNICALLY - ANY SODIUM CHLORIDE PRODUCT > 0.9% CONCENTRATION

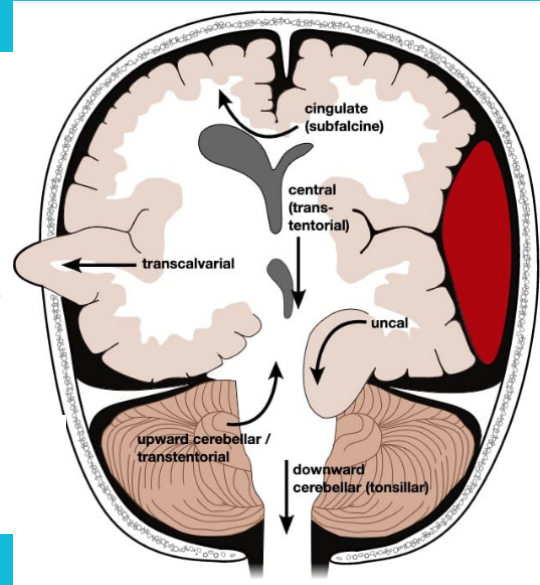
WHAT WE HAVE - 3% SODIUM CHLORIDE

MECHANISM - WATER FLOWS FROM AREA OF LOWER CONCENTRATION TO HIGHER CONCENTRATION



INDICATIONS

- RISK OF HERNIATION
- TRAUMATIC BRAIN INJURY
- CEREBRAL EDEMA



ADVERSE EFFECTS

- OSMOTIC DEMYELINATION SYNDROME - IRREVERSIBLE
- PULMONARY EDEMA
- HYPERNATREMIA
- METABOLIC ACIDOSIS

HOW TO ORDER:

Sodium Chloride 3% (HYPERTONIC) Orders + Labs

sodium chloride 3% (HYPERTONIC) bolus infusion:

sodium chloride 3% (HYPERTONIC) bolus infusion (PEDIATRIC) (\$)

DOSE

- 5 ML/KG UP TO 250 ML IV OVER 10-30 MIN

WHERE TO FIND

- PEDS ED MAIN PYXIS (EPED)
- ED ACUTE PYXIS

OVERRIDE PULL REQUIRES DUAL VERIFICATION