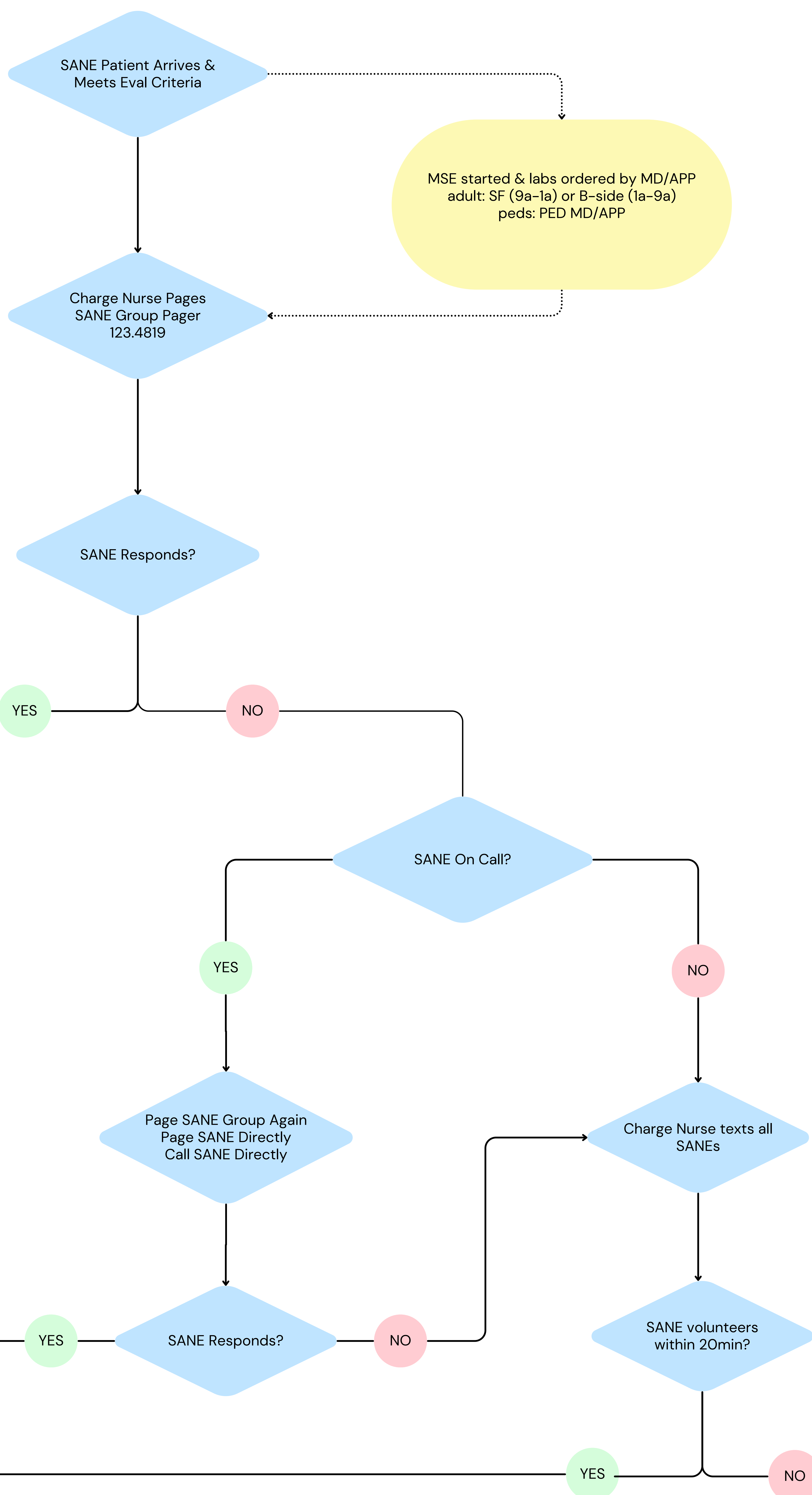
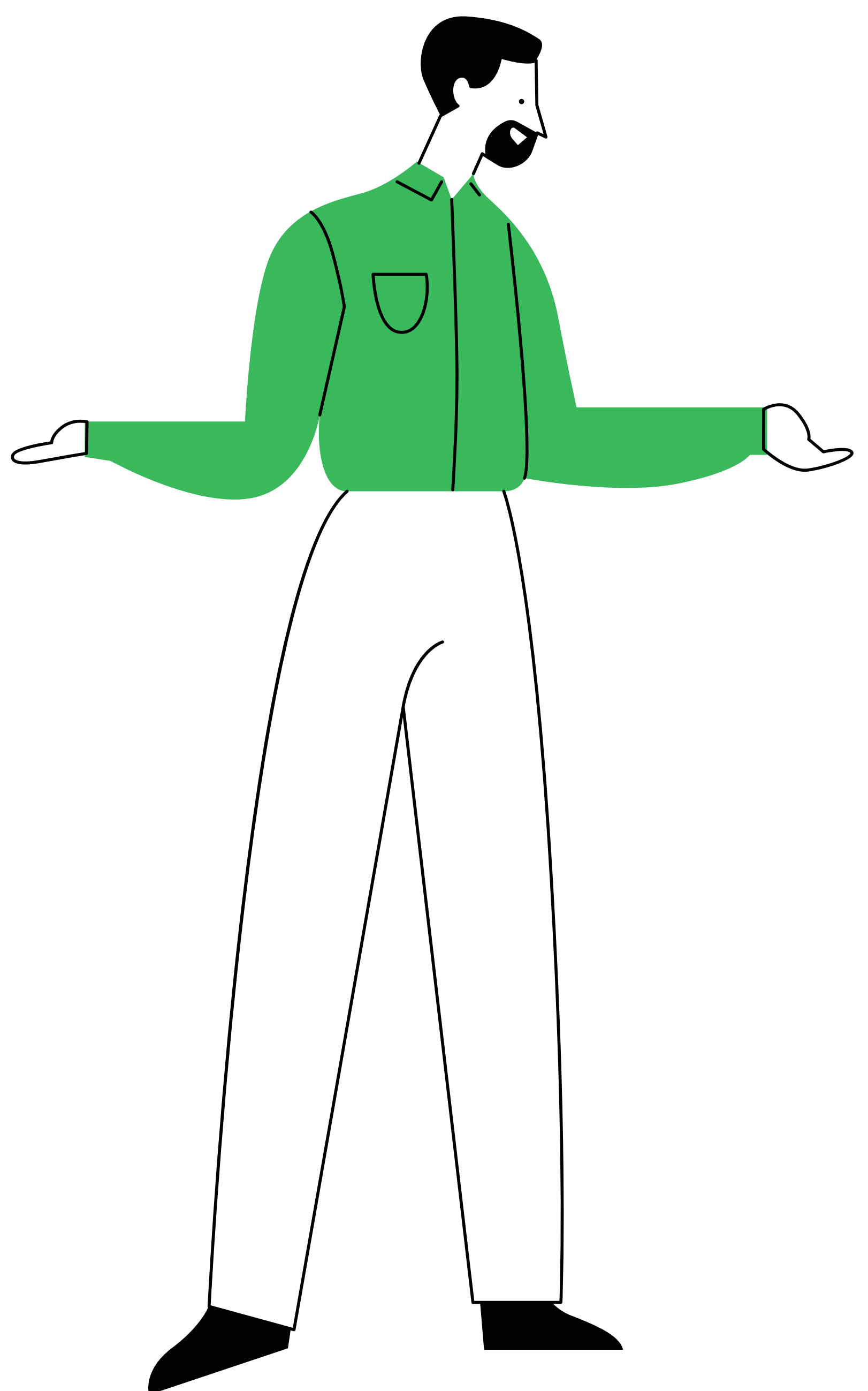


SANE Decision Tree



MSE started & labs ordered by MD/APP
 adult: SF (9a-1a) or B-side (1a-9a)
 peds: PED MD/APP

- SANE Eval Criteria**
- within time window
 - (72hrs prepubertal, 120hrs adult/adolescent)
 - wants evidence collection
 - medically & psychiatrically stable
 - consentable / legal guardian available

- Roles & Responsibilities**
- SANE Coordinator**
- Provide call coverage M-F 0700-1500
 - Monitor SANE schedule to prevent large gaps in coverage
 - Provide back up support to SANE evaluating patient
- Charge Nurse**
- Text SANEs for volunteer using email-to-text list
 - Bed management / room assignment for SANE patient before & after exam
 - Shuffle staffing resources
- House Sup**
- Pull RNs from IP staffing
 - Provide RNs to relieve ED or IP SANE in staffing
- MD/APP**
- Begin medical evaluation including:
 - MSE
 - baseline labs
 - pregnancy prophylaxis
 - STI prophylaxis
 - HIV nPEP

- Resource Allocation Ideas**
- Ask SANE on next call shift to come in early
 - Pull SANE from ED staffing (if not now, maybe later)
 - Ask other ED staff to come in early to relieve SANE in staffing
 - Ask SANE staffing on later shift to come in early

